

Warehouse Management

The always-now economy of today demands speed and agility in the order fulfillment process that can only be realised through efficient supply chain responsiveness and a systematic usage of operational space and facilities. Before-time, as oppose to on-time delivery is fast becoming a key strategic business target.

Directing nimbler, extensible operations.

EnterpriseBuilder®

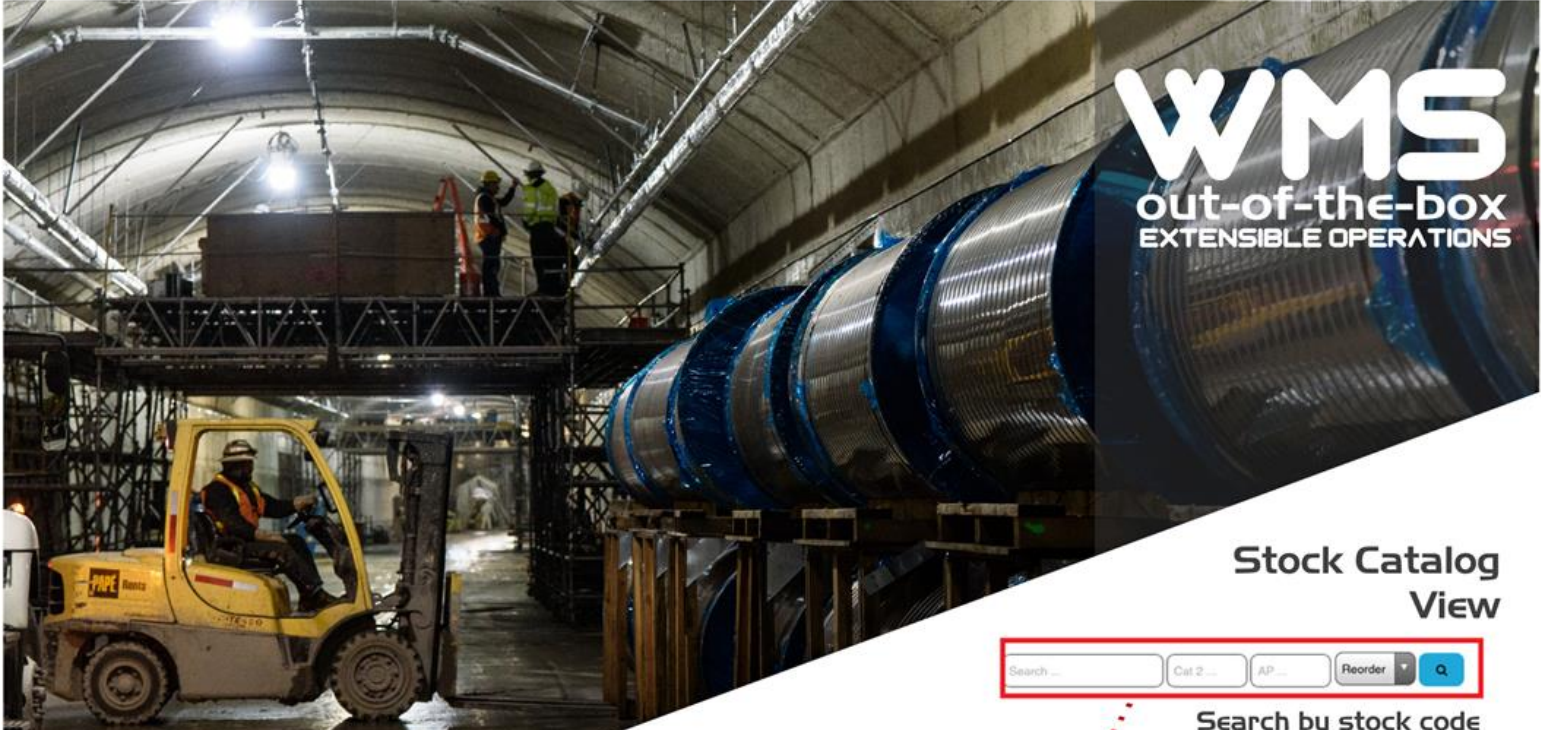
Building Smarter Enterprises

WMS
out-of-the-box
EXTENSIBLE OPERATIONS



WMS

out-of-the-box
EXTENSIBLE OPERATIONS

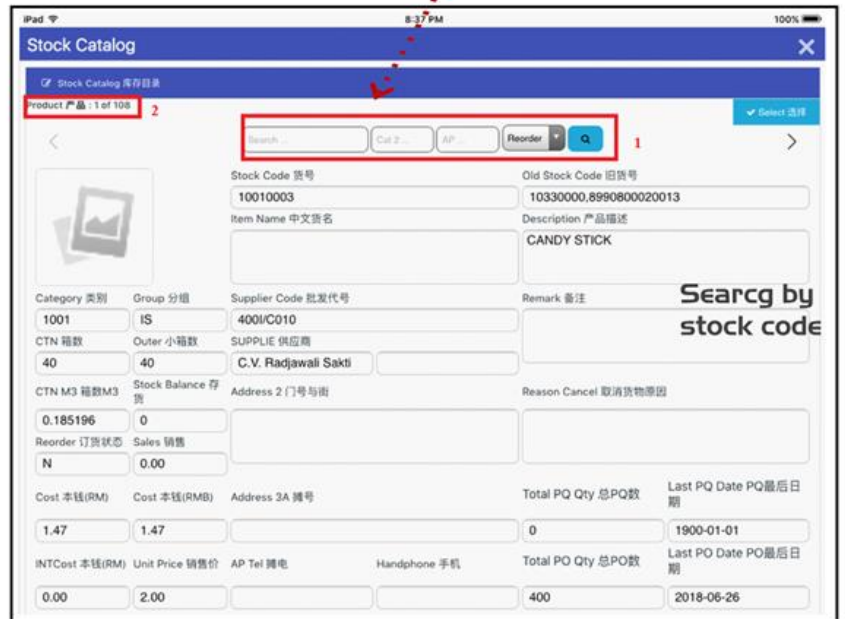
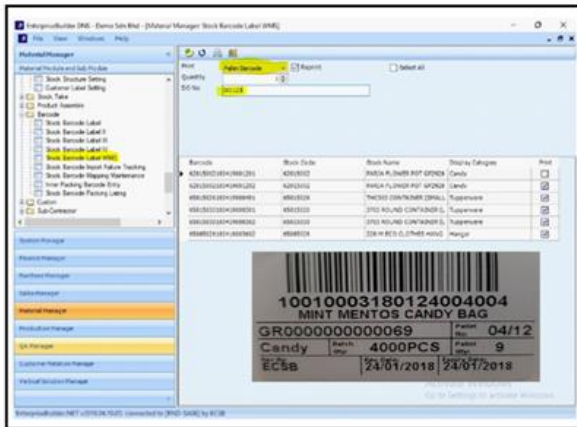


Stock Catalog View

Search Cat 2 AP Reorder

Search by stock code

Pallet Bar Coding Label Printing

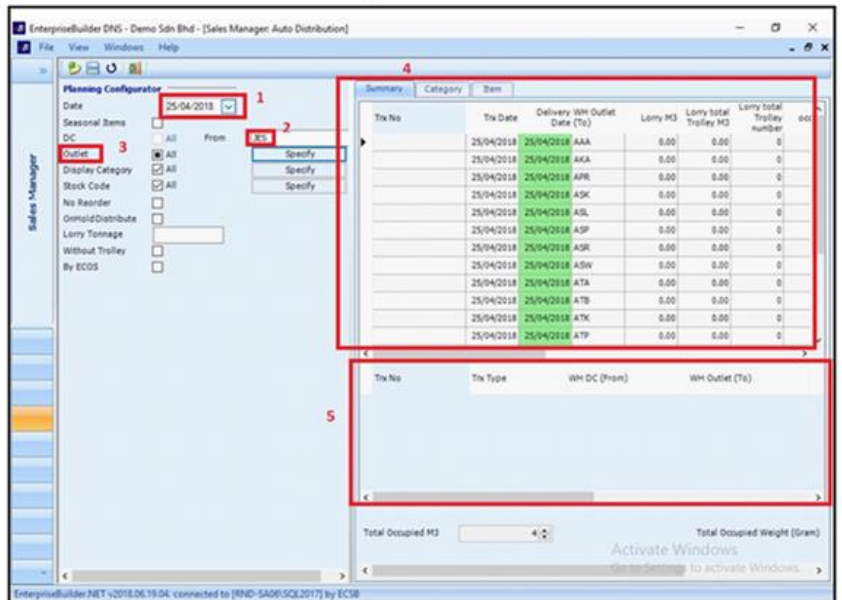


Extensible WMS tools

Your advanced distribution strategy may require your organization to:

- ⊗ Improve order accuracy and inventory transparency.
- ⊗ Integrates seamlessly with multi-carrier shipping and TMS, including ASN printing and EDI.
- ⊗ Reduce inventory carrying cost and enable fast and accurate stock-taking.
- ⊗ Reduce labour costs, and potential chargebacks and penalties from retailers.
- ⊗ Various available pick methods and dynamic auto distribution module (outlet order fulfillment) based on outlet and transportation requirements.

Outlet Order Fulfillment with Dynamic Auto Distribution

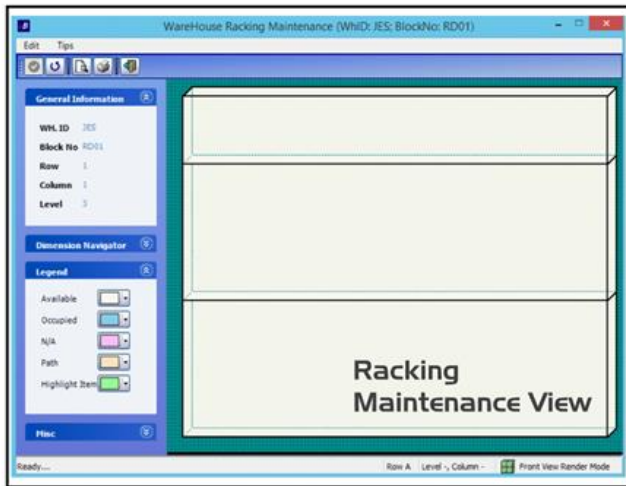


WMS

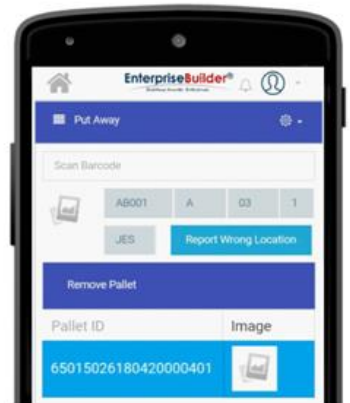
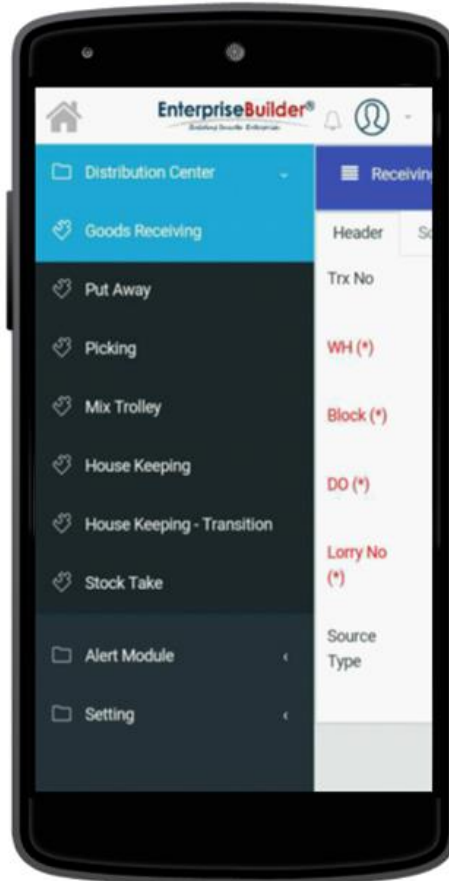
out-of-the-box
EXTENSIBLE OPERATIONS

Automated WMS workflow

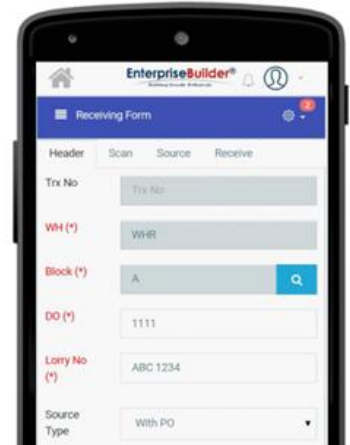
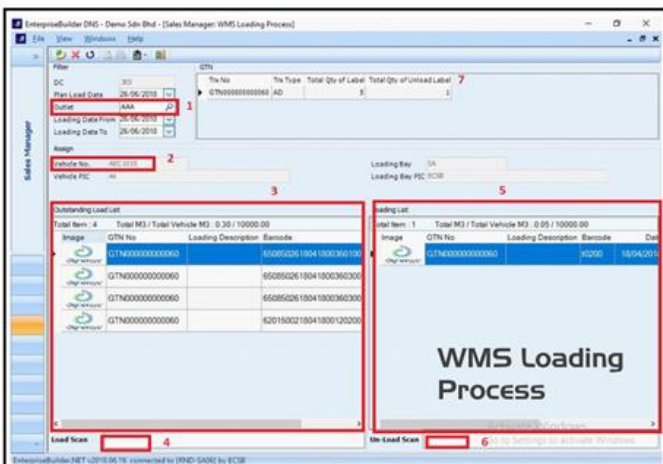
- ⊗ Multiple pick options.
- ⊗ Put away warehouse and location suggestion triggered when pallet barcodes are scanned.
- ⊗ Accurate stock take exercises with auto-generated stock adjustments after confirmation.
- ⊗ Purchase planning accounting for seasonal items.
- ⊗ Goods receive with user definable checklist.
- ⊗ Multi-level approval purchase requisition planning.
- ⊗ Loading list based on the delivery planning sequence matching specifications from Auto Distribution.
- ⊗ Stock housekeeping via bar code scanning, including for multiple pallets.



WMS Mobile View



System auto-generates Pallet Bar Code



Receiving Form





WMS features

- ⊗ Multi-channel order fulfillment.
- ⊗ Simplifying task management with wave pick management.
- ⊗ Customizable user experience based on unique business roles and workflow, leveraging system generated alerts and emails.
- ⊗ eSignature and paperless documentation.
- ⊗ Enable orders on offline mode critical for imported items / foreign suppliers.
- ⊗ VMI-supported inventory management.
- ⊗ Seamless integration into other enterprise systems (TMS & ERP).
- ⊗ Mobility-enabled, allowing report review and approval on-the-go.
- ⊗ Integrates RFID and bar coding systems, enabling Trolley Management.